

Ridge Vent RH200

Application

The RH200 from J.A. Plast is an excellent choice for ventilation of the roof space and batten cavity through the ridge.

Ventilating through the ridge is an efficient way to prevent humidity and condensation from causing dry rot and damage to the roof construction.

Please refer to national standards.

Available as:

RH200, 300 mm wing
for 15° or 20°
Supplied with 2 foam strips

RH200, 240 mm wing
for 15-20°, 25-30°, 35-40° or 45-50°
Supplied with fixings. Foam strips applied.

- **20,000 mm² ventilation area**
- **For roofing materials with angle ridge**

Design

The RH200 vent is designed for outlet through the ridge especially developed to comply with the requirement in humid climates, where ventilation is even more essential. A built-in protective grille keeps out insects and drifting snow. The vent is supplied installed on a base plate shaped to fit each particular ridge.

RH200 is easily installed with the rest of the ridge elements.

Colour and Surface

Special coloured, glossy or structured with sand of granules the vents can be supplied with a 100% colour and surface match individually adjusted to each roofing material.

Materials

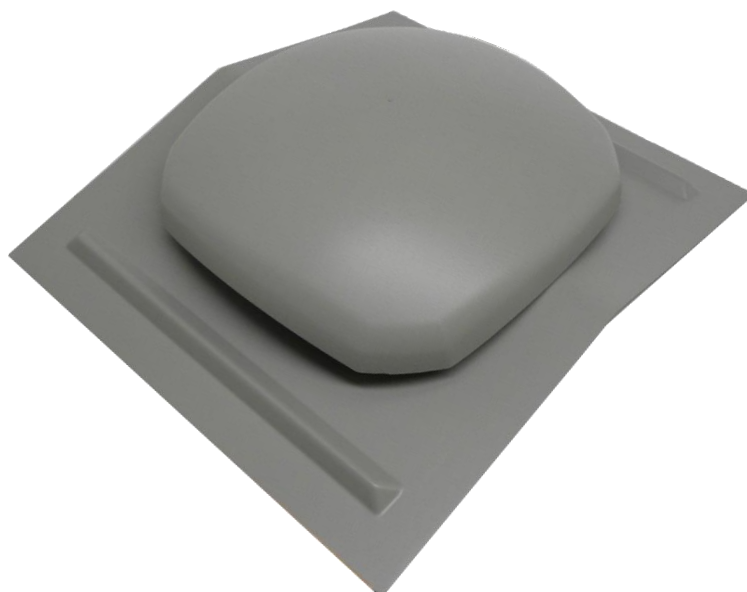
The vent is manufactured from HIPS (High Impact Polystyrene).

Handling

Keep in original packaging during transport.

Do not wrap and expose to heavy load during transport.

Remove plastic bag before placing in sunlight.



Roofing accessories supplied from J.A. Plast match roof profile, colour and surface 100%. The current product list and further information can be found on our homepage, www.japlast.com.